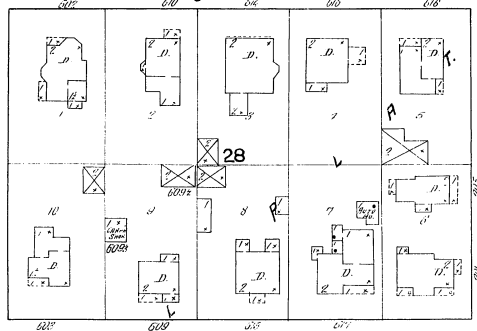


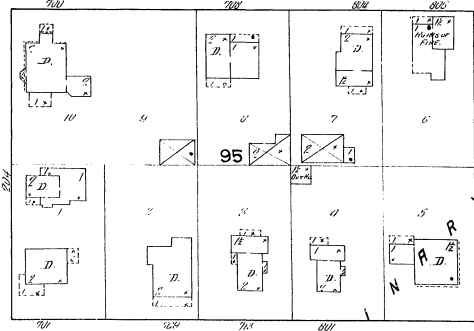
MAR. 1913  
**ALBION**  
MICH.

8

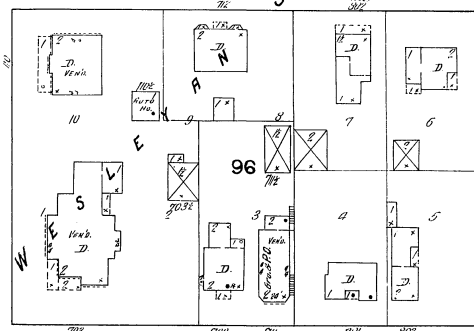
E. MICHIGAN



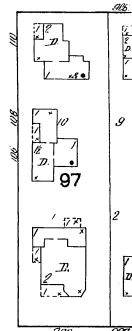
PERRY



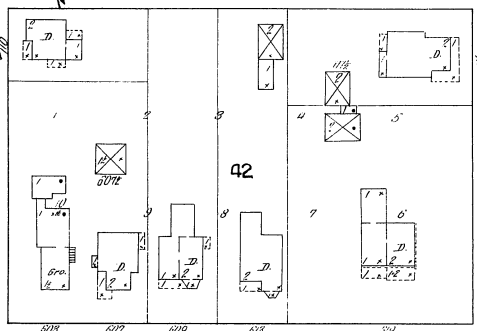
N. INGHAM



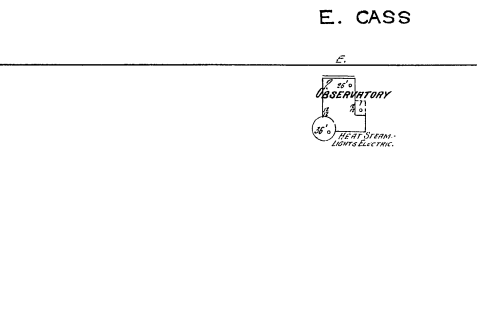
N. HANNAH



E. CASS



OSWEGO



A L B I O N C O L L E G E

S. HANNAH 66 ft wide



JACKSON ST.

M<sup>rs</sup> MILLER LABORATORY  
HEAT-STEAM-LIGHTS-ELECTRIC

THE LOTTIE L. GASSETT  
MEMORIAL LIBRARY  
HEAT-STEAM-LIGHTS-ELECTRIC

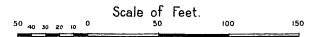
COMMERCIAL DEPT.  
FLOORS 2<sup>ND</sup> & 3<sup>RD</sup>  
HEAT-STEAM-LIGHTS-ELECTRIC

ROBINSON HALL  
HEAT-STEAM-LIGHTS-ELECTRIC

GYMNASIUM

CHAPEL & MUSIC CONSERVATORY  
HEAT-STEAM-LIGHTS-ELECTRIC

E. PORTER



11

S. INGHAM ST.