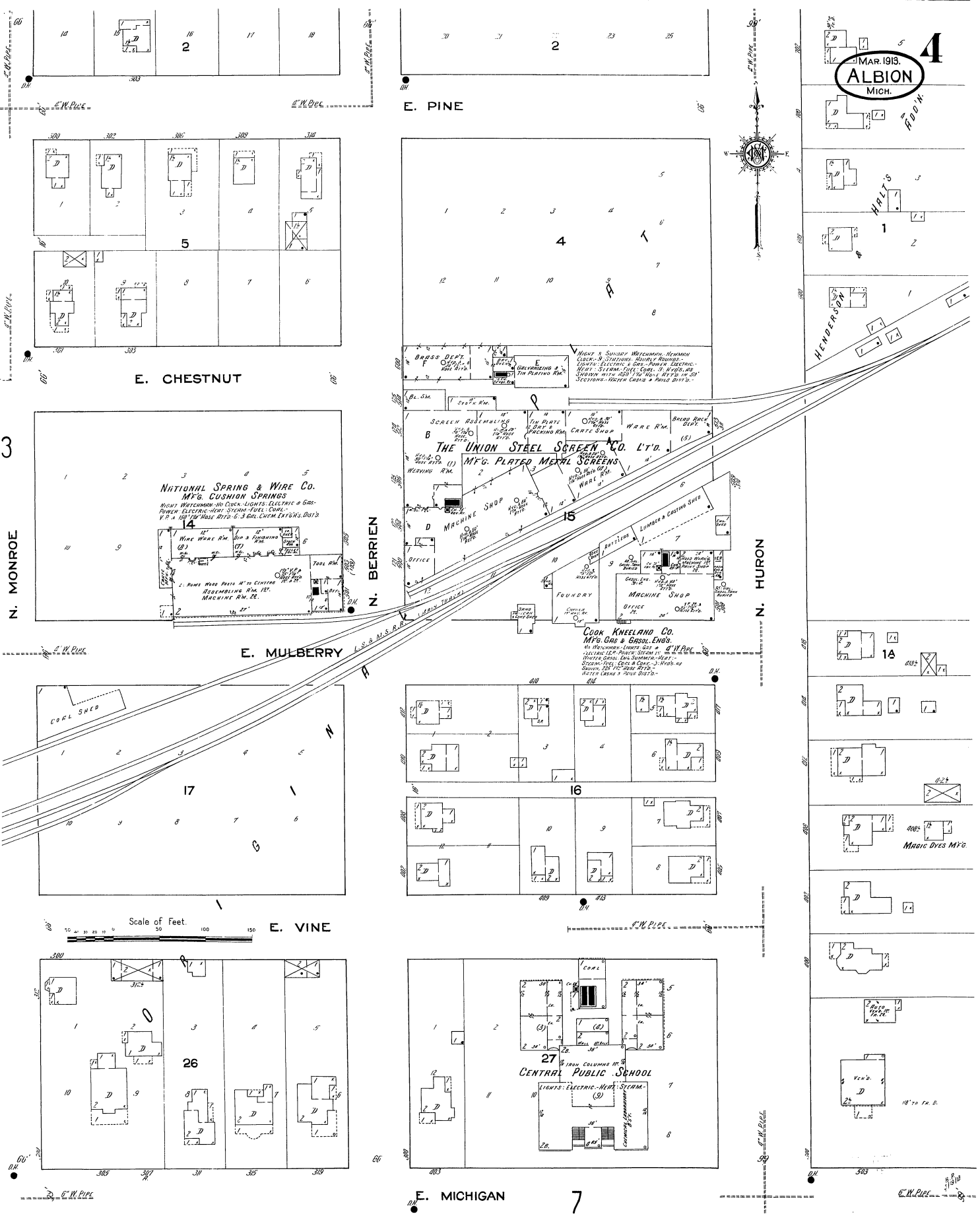


MAR. 1913.  
**ALBION**  
MICH.



E. CHESTNUT

E. PINE

E. MULBERRY

E. VINE

E. MICHIGAN

**NATIONAL SPRING & WIRE CO.**  
MFG. CUSHION SPRINGS  
MACH. WATCHMAN, NO. COOK, LIGHTS, ELECTRIC & GAS-  
FURNACE, ELECTRIC-HOSE, STEAM-TRUCKS, SCREW-  
V.P. & 150' HOSE, AUTO. 6-3 GAL. CHEM. EXTRACTS, DIST'D

**THE UNION STEEL SCREEN CO. LTD.**  
MFG. PLATED METAL SCREENS

**COOK KNEELAND CO.**  
MFG. GAS & GASOL. ENGS.  
NO. BUCHANAN, COOK, 120' & 24" IN. PAC.  
LANTERN, 125' POWER, STEAM, 150' & 24" IN. PAC.  
STEAM, 150' & 24" IN. PAC.  
STEAM, 150' & 24" IN. PAC.  
STEAM, 150' & 24" IN. PAC.

**CENTRAL PUBLIC SCHOOL**  
1900, COLLINGS, 110'

