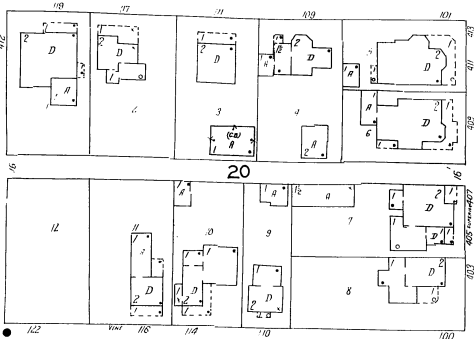


MICH. 501

2 40

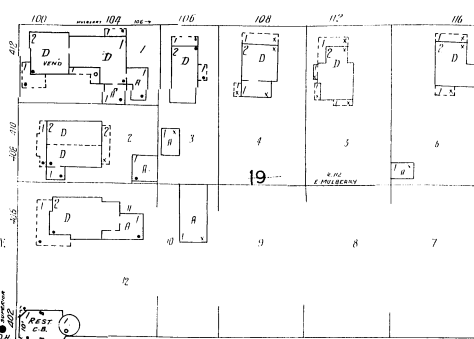
W. MULBERRY



W. VINE

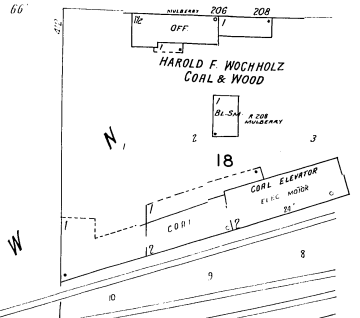
Y Y C R R (LANSING DIV)

E. MULBERRY

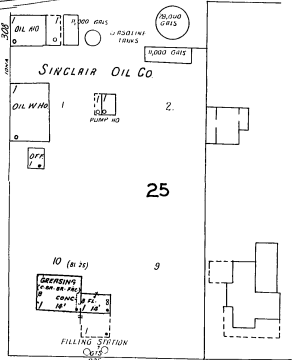


JAN. 1931  
ALBION  
MICH.

2



N. IONIA

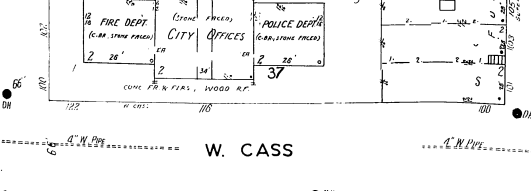
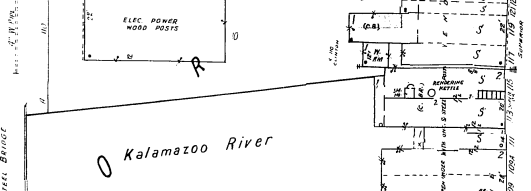
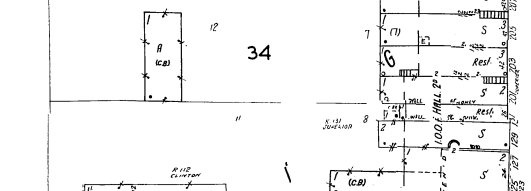
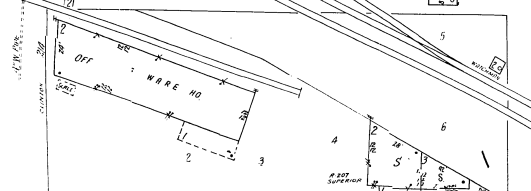


N. CLINTON

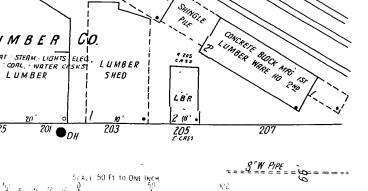
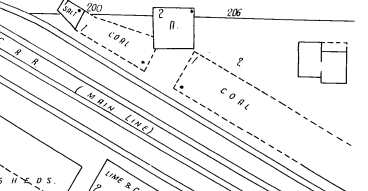
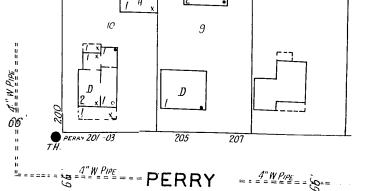
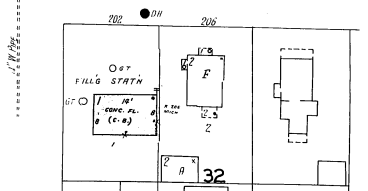
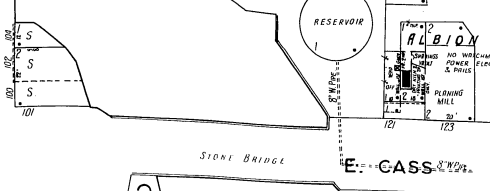
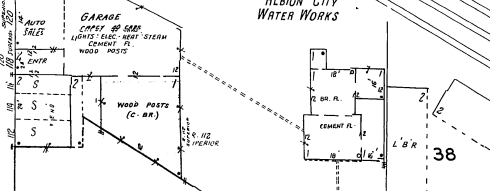
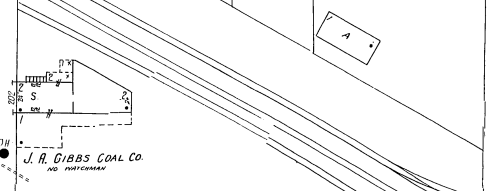
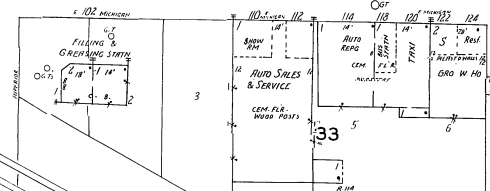
N. SUPERIOR

W. MICHIGAN AV.

E. MICHIGAN AV.



W. CASS



S. CLINTON

S. SUPERIOR

E. CASS

3

